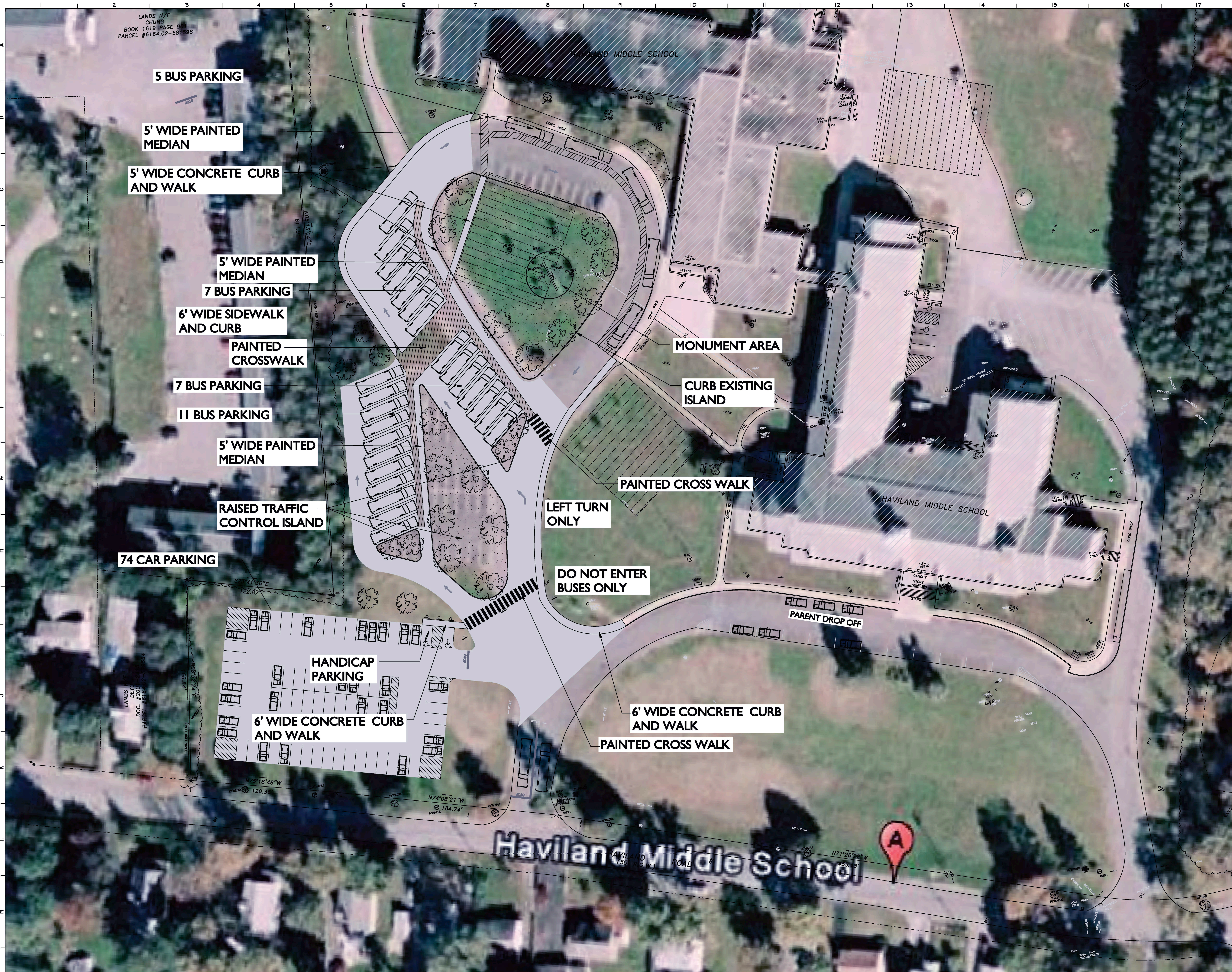


NEW DESIGN SK18

SK18: This design also allows for side-by-side, angled parking for all busses. Although it does call for a double-row of such parking, it provides for raised crosswalks and/or sidewalks. It is within the budget.



S.E.D. Control No. 13-08-01-06-0-001-018

Rev. No.	Date	Description

**Hyde Park Central
School District**

complex world
CLEAR SOLUTIONS

Tetra Tech Engineers, Architects
& Landscape Architects, P.C.

Tt TETRA TECH
ARCHITECTS & ENGINEERS

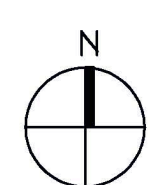
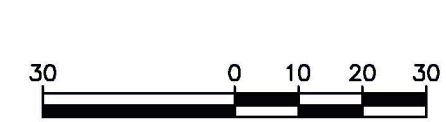
Hyde Park Central School District

Renovations to:
Haviland Middle School

Bus Loop Plan - Option 18
30 BUS PLAN

Drawn by: JMS	Date: 08.19.10	Drawing No.:
Tetra Project No.:		SK-18
08060-09001		

Hyde Park-Haviland Middle School
1"=30'-0"



Rendering 18

Pros

- **No aesthetic change, maintains the current front curve and lawn in its entirety.**
- **No affects on septic fields or 911 memorial**
- Multiple outside door access reduces student congestion upon entering / exiting building
- Assigned permanent bus spaces, accommodates late arrivals
- **In Prop III budget**

Cons

- Excessive cross walks, difficult to supervise all areas
- More complicated layout
- Nose to tail line up (partial)
- Double lineup (partial)
- Busses located away from building
- Handicapped parking in loop / limited access during arrival and dismissal
- Parent exit shared with bus traffic